

Service Manual

Compact Plain Paper Fax



KX-FP81AL/KX-FP81NZ
KX-FP81HK
KX-FP81ML
KX-FP81SA
KX-FP85AL/KX-FP85NZ
KX-FP85SA
KX-FP86TW

(for Australia)

(for New Zealand)

(for Hong Kong)

(for Malaysia)

(for South Africa)

(for Taiwan)

Subject : Parts Change

Please file and use this supplement manual together with the original service manuals for the following models.

Model No.	Order No.	Supplement No.
KX-FP81AL / KX-FP81NZ	KMF0009441C3	1
KX-FP81HK	KMF0010454C3	1
KX-FP81ML	KMF0010455C3	1
KX-FP81SA	KMF0011466C3	1
KX-FP85AL / KX-FP85NZ	KMF0010445C3	1
KX-FP85SA	KMF0011448C3	1
KX-FP86TW	KMF0011465C3	1

WARNING

This service information is designed for experienced repair technicians only and is not designed for use by the general public. It does not contain warnings or cautions to advise non-technical individuals of potential dangers in attempting to service a product. Products powered by electricity should be serviced or repaired only by experienced professional technicians. Any attempt to service or repair the product or products dealt with in this service information by anyone else could result in serious injury or death.

Panasonic

© 2001 Kyushu Matsushita Electric Co., Ltd. All rights reserved. Unauthorized copying and distribution is a violation of law.

1 REPLACEMENT PARTS LISTS

1.1. REFERENCE CHART

Reason for Change	
*The following items (1-8) indicate the reason for change. See the "Notes" column for each part in ORIGINAL AND NEW PARTS COMPARISON LIST(S) .	
1. Improve performance	Remarks: *a: To improve the electric conduction. *b: To change the factory mode. *c: To share the part with other models. *d: For improvement of copy performance. *e: To improve how to set up..
2. Change of material or dimension	
3. To meet approved specification	
4. Standardization	
5. Addition	
6. Deletion	
7. Correction	
8. Other	

Interchangeability Code		
**The following items (V-Z) indicate the interchangeability. See the "Notes" column for each part in ORIGINAL AND NEW PARTS COMPARISON LIST(S) .		
Parts	Set Production	
V Original New	Early (before change) Late (after change)	Original or new parts may be used in early or late production set. Use original parts until exhausted, then stock new parts.
W Original New	Early (before change) Late (after change)	Original parts may be used in early production sets only. New parts may be used in early or late production sets. Use original parts where possible, then stock new parts.
X Original New	Early (before change) Late (after change)	New parts only may be used in early or late production sets. Stock new parts.
Y Original New	Early (before change) Late (after change)	Original parts may be used in early production sets only. New parts may be used in late production sets only. Stock both original and new parts.
Z Other		

Note:

Alphabets in the "Remarks" column in the following lists correspond to the alphabets in the "Remarks" in **REFERENCE CHART**.

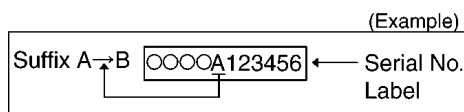
1.2. ORIGINAL AND NEW PARTS COMPARISON LIST(S)

1.2.1. KX-FP81AL, KX-FP81NZ

Change of the Suffix Code (for KX-FP81NZ)

Suffix Code	Reasons of change
A→B	To upgrade the ROM version for improvement of the Caller ID display. Program No. is changed from E581NA to E581NB .

Serial No.Label tells you the suffix code as follows.



Ref No.	Part No.		Part Name & Descriptions	Pcs/Set	Remarks	Notes		Suffix
	Original Part No.	New Part No.						
CABINET AND ELECTRICAL SECTION								
36	PFHX1342X	PFHX1342Z	INSULATOR, STATICELEC. (RIGHT)	1	*d	1	V	
45	PF0U1022Z	PF0U1022Y	PHOTO ELECTRIC TRANSDUCER, IMAGE SENSOR(CIS)	1	*a	1	V	
51	-----	PFHX1457Z	SPACER, SHEET (Refer to UPPER CABINET SECTION)	2	*d	5	W	
132	PFUA1024Z	PFZMFM189E	CHASSIS KIT, GEAR BASE (Refer to MOTOR SECTION)	1	*c	4	V	
ACCESSORIES AND PACKING MATERIALS								
A2	PQJA10035Z	PFJA02B004Z	CORD, TELEPHONE (for KX-FP81AL)	1	*c	4	V	
DIGITAL BOARD PARTS								
IC502	PFWIFP81NZ	PFWIFP81NZ1	IC(ROM) (for KX-FP81NZ)	1	*b	1	V	B

1.2.2. KX-FP81HK

Ref No.	Part No.		Part Name & Descriptions	Pcs/Set	Remarks	Notes		Suffix
	Original Part No.	New Part No.						
CABINET AND ELECTRICAL SECTION								
36	PFHX1342X	PFHX1342Z	INSULATOR, STATICELEC. (RIGHT)	1	*d	1	V	
45	PF0U1022Z	PF0U1022Y	PHOTO ELECTRIC TRANSDUCER, IMAGE SENSOR(CIS)	1	*a	1	V	
65	PFKV1025Y1	PFKV1025X1	COVER, UPPER TURN (Refer to BACK COVER 1)	1	*e	1	W	

1.2.3. KX-FP81ML

Ref No.	Part No.		Part Name & Descriptions	Pcs/Set	Remarks	Notes		Suffix
	Original Part No.	New Part No.						
CABINET AND ELECTRICAL SECTION								
36	PFHX1342X	PFHX1342Z	INSULATOR, STATICELEC. (RIGHT)	1	*d	1	V	
45	PF0U1022Z	PF0U1022Y	PHOTO ELECTRIC TRANSDUCER, IMAGE SENSOR(CIS)	1	*a	1	V	

1.2.4. KX-FP81SA

Ref No.	Part No.		Part Name & Descriptions	Pcs/Set	Remarks	Notes	Suffix
	Original Part No.	New Part No.					
CABINET AND ELECTRICAL SECTION							
36	PFHX1342X	PFHX1342Z	INSULATOR, STATICELEC. (RIGHT)	1	*d	1	V

1.2.5. KX-FP85AL, KX-FP85NZ

Ref No.	Part No.		Part Name & Descriptions	Pcs/Set	Remarks	Notes		Suffix
	Original Part No.	New Part No.						
CABINET AND ELECTRICAL SECTION								
36	PFHX1342X	PFHX1342Z	INSULATOR, STATICELEC. (RIGHT)	1	*d	1	V	
45	PF0U1022Z	PF0U1022Y	PHOTO ELECTRIC TRANSDUCER, IMAGE SENSOR(CIS)	1	*a	1	V	
51	-----	PFHX1457Z	SPACER, SHEET (Refer to UPPER CABINET SECTION)	2	*d	5	W	
132	PFUA1024Z	PFZMFM189E	CHASSIS KIT, GEAR BASE (Refer to MOTOR SECTION)	1	*c	4	V	
ACCESSORIES AND PACKING MATERIALS								
A2	PQJA10035Z	PFJA02B004Z	CORD. TELEPHONE (for KX-FP85AL)	1	*c	4	V	

1.2.6. KX-FP85SA

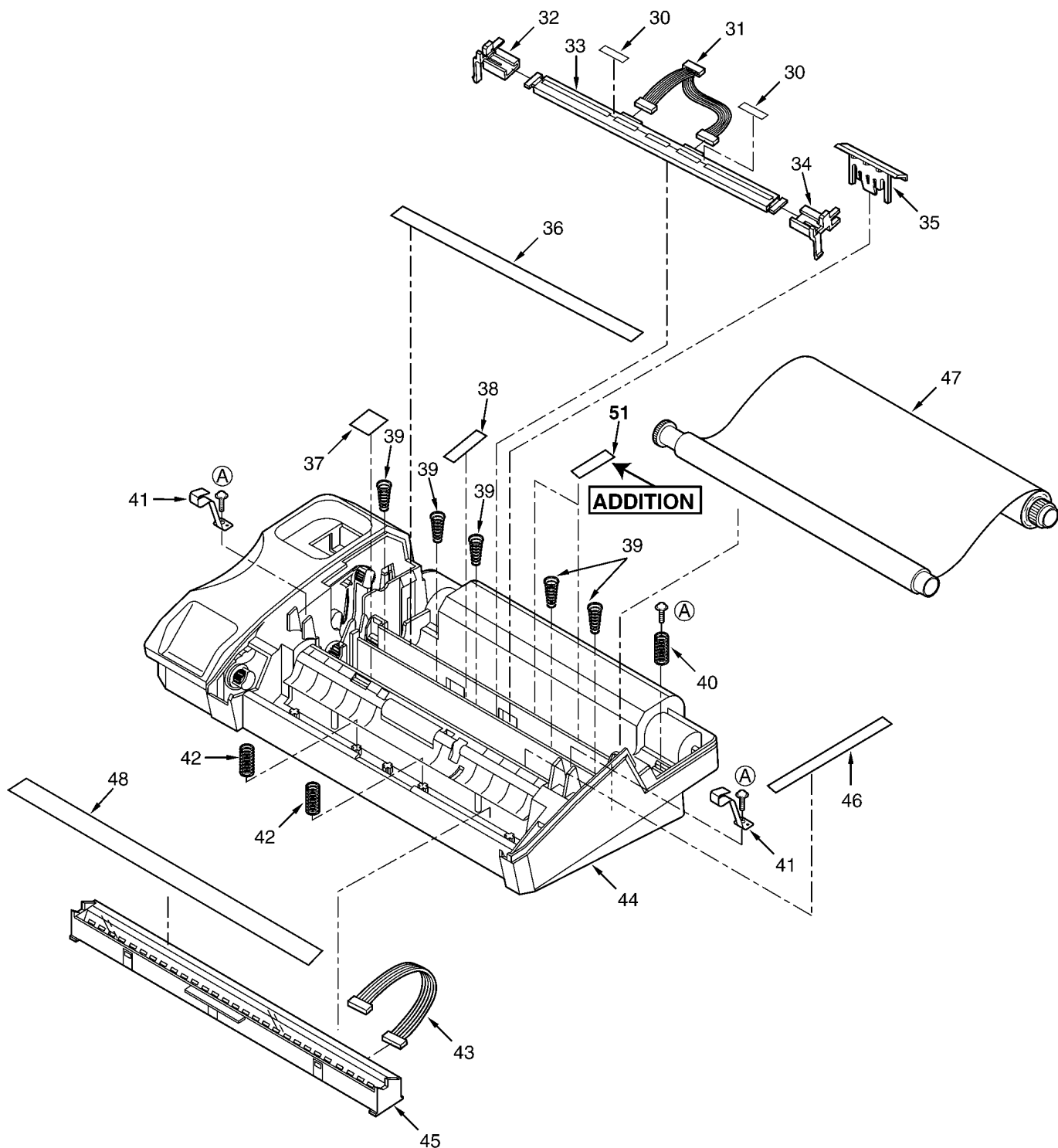
Ref No.	Part No.		Part Name & Descriptions	Pcs/Set	Remarks	Notes		Suffix
	Original Part No.	New Part No.						
CABINET AND ELECTRICAL SECTION								
36	PFHX1342X	PFHX1342Z	INSULATOR, STATICELEC. (RIGHT)	1	*d	1	V	
ANALOG BOARD PARTS								
R125	ERJ3GEYJ271	ERJ3GEYJ561	RESISTOR, 560	1	*a	1	X	
R128	ERJ3GEYJ431	ERJ3GEYJ561	RESISTOR, 560	1	*a	1	X	
C133	PQCUV1C224KB	PQCUV1C474	CAPACITOR, 0.47	1	*a	1	X	
C153	ECEA1HKS4R7B	ECEA1HKS010	CAPACITOR, 1P	1	*a	1	X	
C159	ECEA1CKS100B	ECEA1CKS470	CAPACITOR, 47P	1	*a	1	X	

1.2.7. KX-FP86TW

Ref No.	Part No.		Part Name & Descriptions	Pcs/Set	Remarks	Notes		Suffix
	Original Part No.	New Part No.						
CABINET AND ELECTRICAL SECTION								
36	PFHX1342X	PFHX1342Z	INSULATOR, STATICELEC. (RIGHT)	1	*d	1	V	

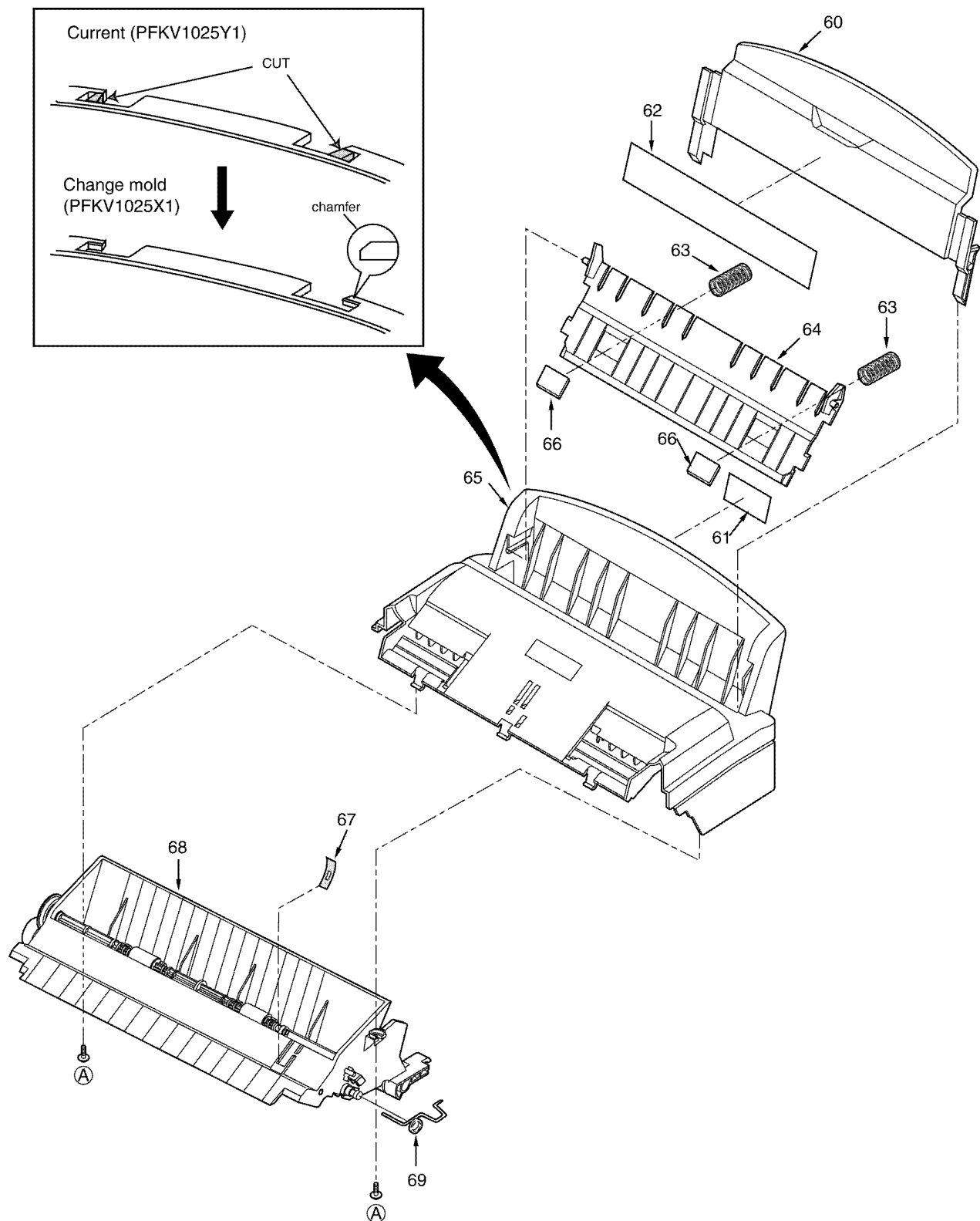
2 CABINET, MECHANICAL AND ELECTRICAL PARTS LOCATION

2.1. UPPER CABINET SECTION



2.2. BACK COVER SECTION

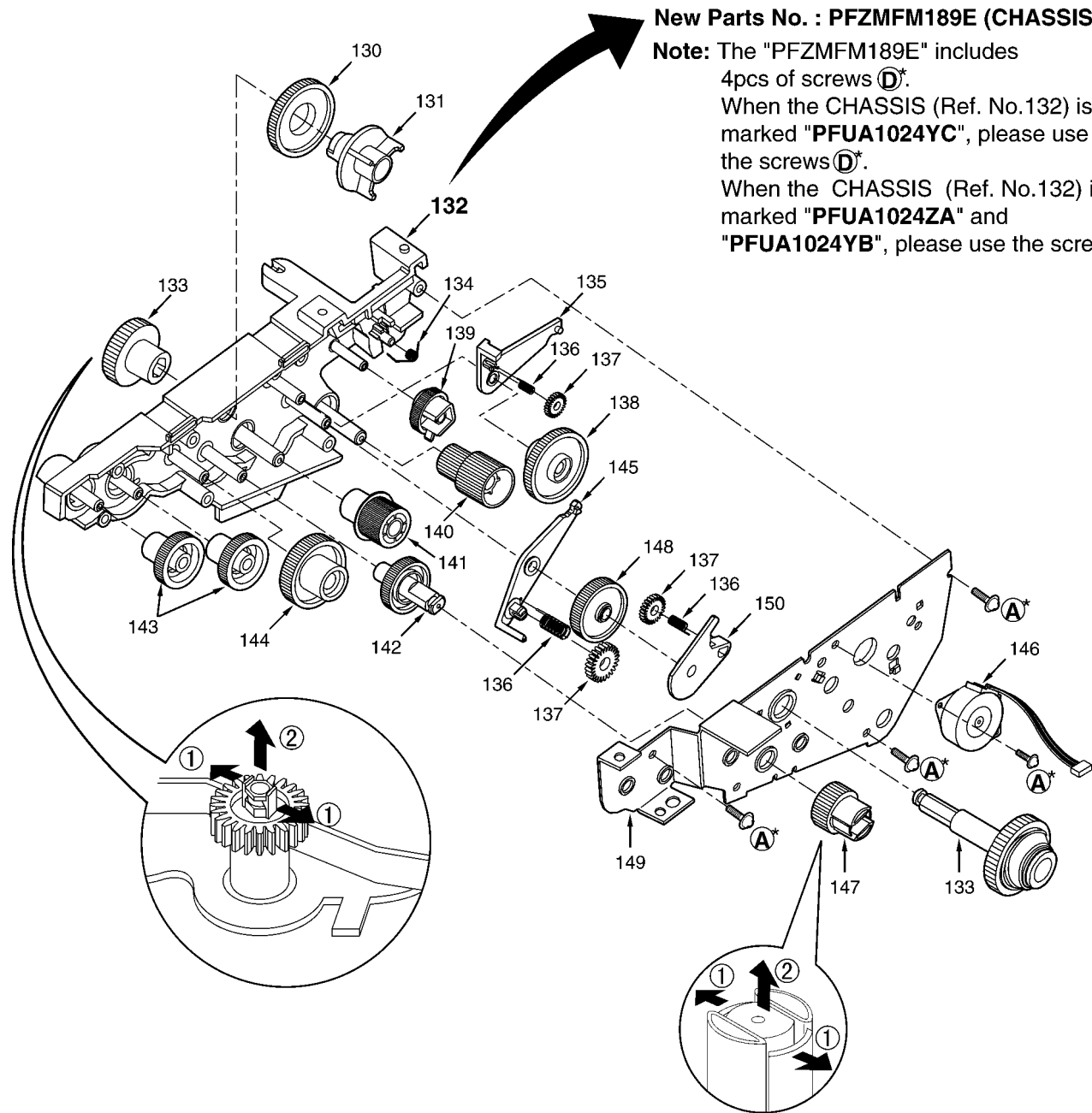
2.2.1. BACK COVER 1

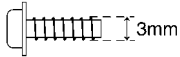
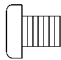

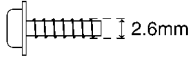


2.3. MOTOR SECTION

New Parts No. : PFZMFM189E (CHASSIS KIT)

Note: The "PFZMFM189E" includes 4pcs of screws ①*.
When the CHASSIS (Ref. No.132) is marked "PFUA1024YC", please use the screws ①*.
When the CHASSIS (Ref. No.132) is marked "PFUA1024ZA" and "PFUA1024YB", please use the screws ②*.



	Part No.	Illustration
①	XTW3+S10P	
②	XSB4+6	
③	XTW3+U14L	
④	XTW26+S10P	

TN
KXFP81AL, KXFP81NZ
KXFP81HK, KXFP81ML
KXFP81SA, KXFP85AL
KXFP85NZ, KXFP85SA
KXFP86TW